

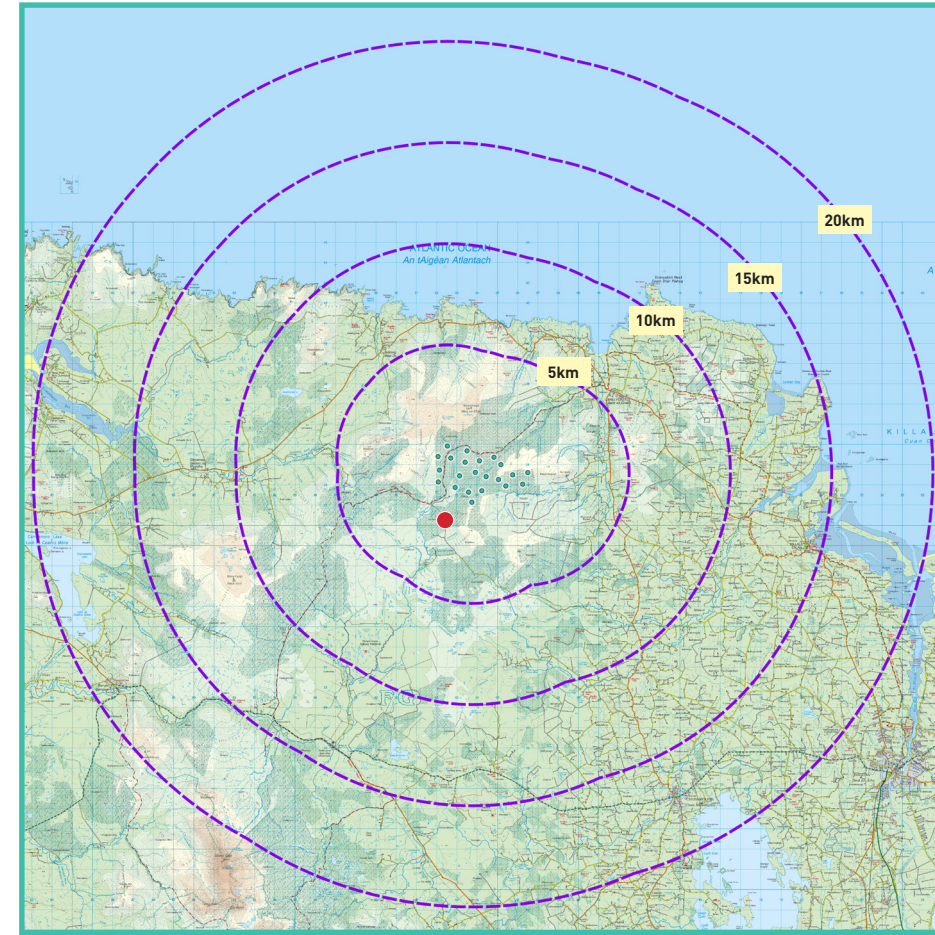
View Point 10

Cluddaun

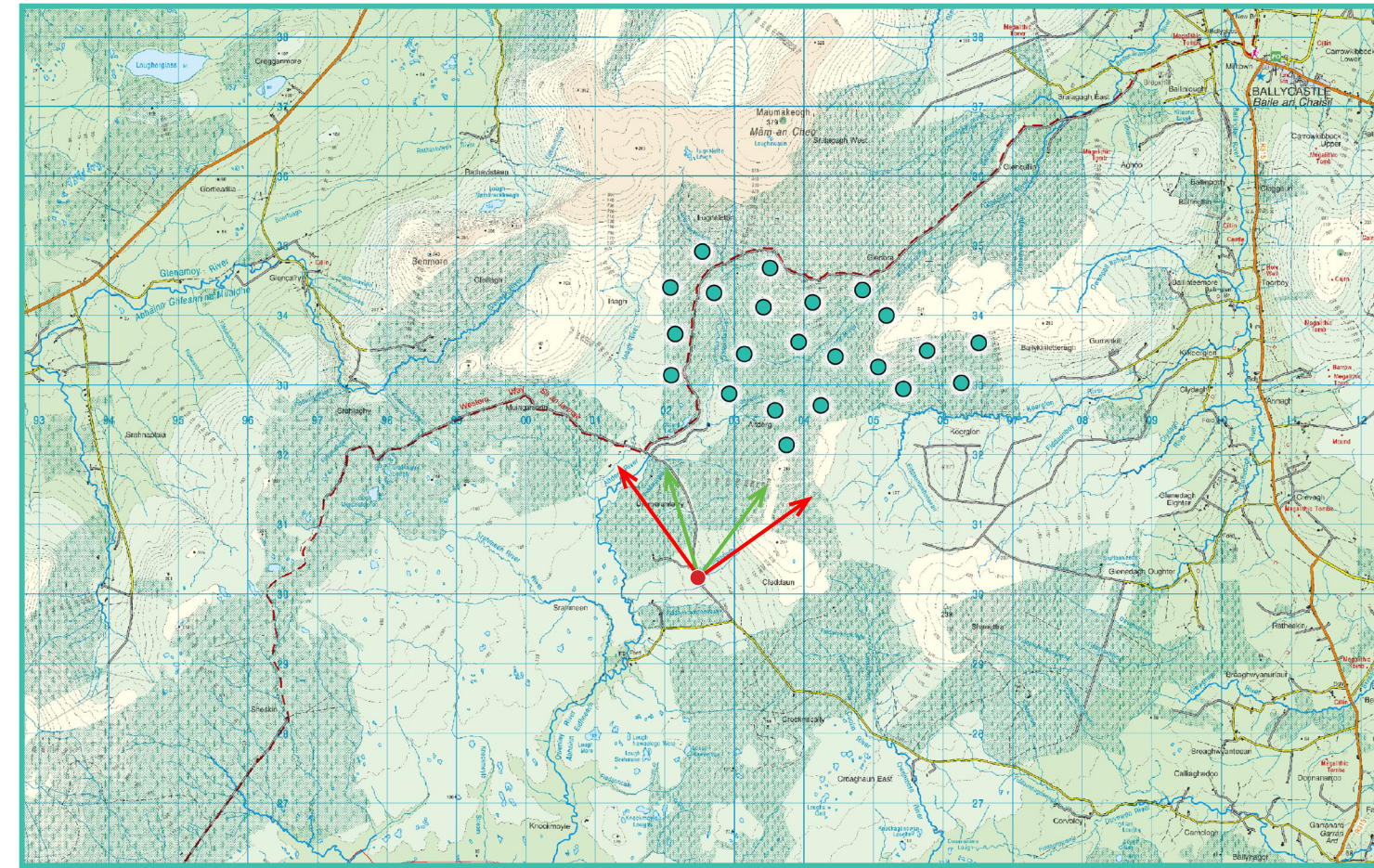
Photomontage 10

View from a local road in the townland of Cluddaun, approximately 2.3km southwest of the nearest proposed turbine.

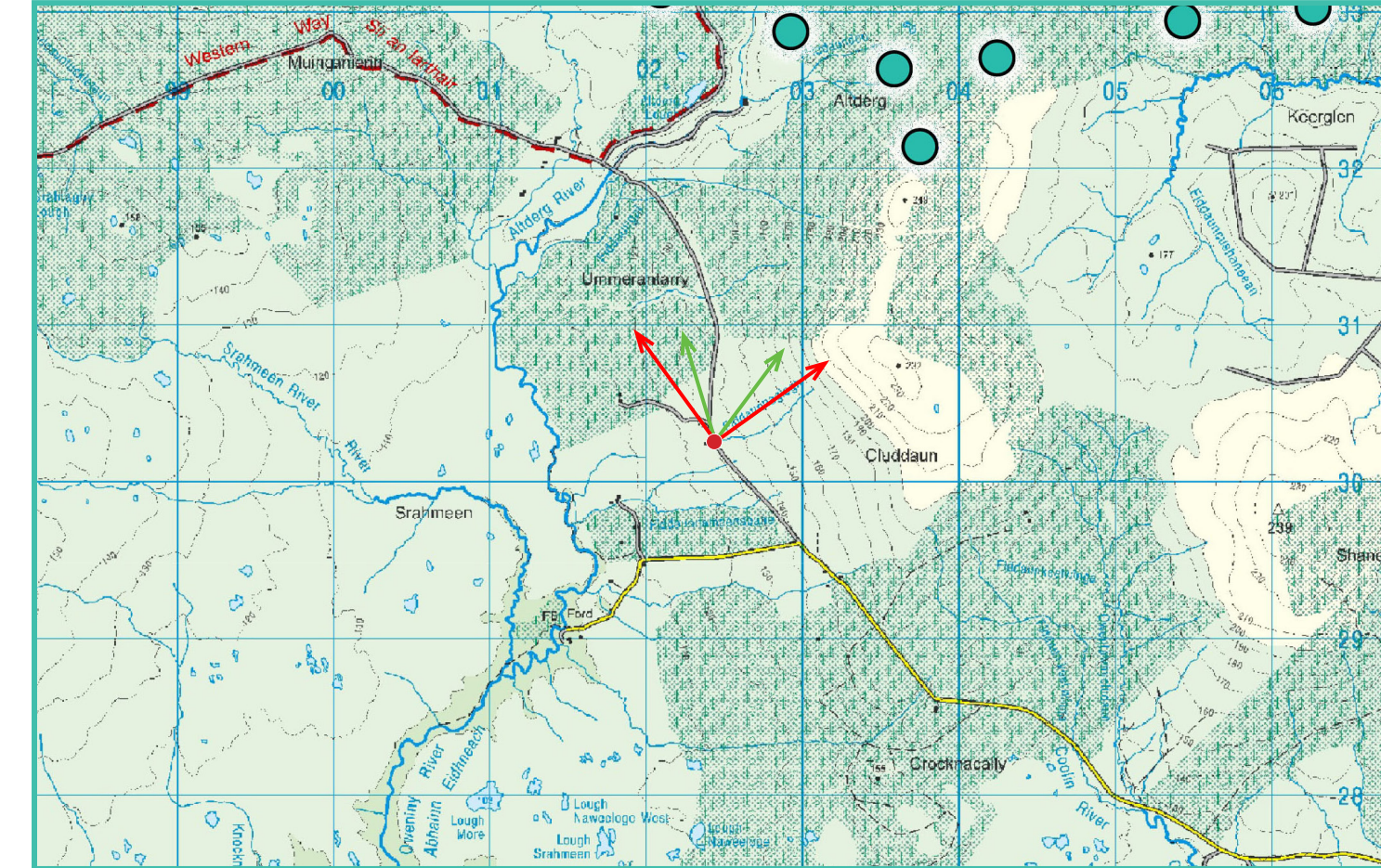
View point grid reference	E 502451 N 830198
Date of image taken	31.05.2023
Time of image taken	12:11
View point elevation	130m
Angle of Views	90° / 53.5°
View Direction (Image Centre)	7°
Horizontal extent of proposed turbines	58°
Distance to nearest proposed turbine	2.3km (T14)
Number of proposed turbines visible	16/22
Turbine Hub Height	99m
Turbine Tip Height	180m
Turbine Rotor Diameter	162m
Montage Type	Type 4* Photomontage / Photowire / Survey / Scale Verifiable
Camera & Lens	Canon 5D Mark III / Full Frame Sensor with a 50mm Lens
Tripod	Manfrotto 190X extended to approx. 1.5m.
Guidance	* Visual Representation of Development Proposals, Landscape Institute Technical Guidance Note 06/19, 2019
Map Licence	© Ordnance Survey Ireland. All rights reserved. Licence number CYAL50267517



View point relative to 20km radius.



View point relative to wind farm site.



Detail of view point location.

Map Legend

- Area shown in 90° view
- Area shown in 53.5° view
- View Point

Wireline Legend

- Proposed Wind Farm
- Proposed Met Mast
- Existing Wind Farms
- Permitted Wind Farms
- Other Proposed Wind Farms

Prepared by

MKO
Planning & Environmental Consultants
Tuam Road, Galway.

Tel: (091) 73 56 11
E-mail: info@mkofireland.ie
Website: www.mkofireland.ie



90° View Extent

Key Image at 120°

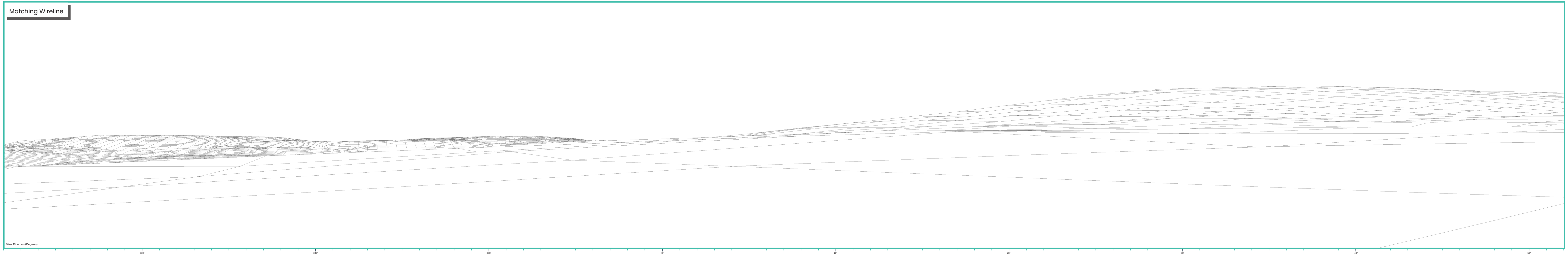


53.5° View Extent

Existing View at 90°



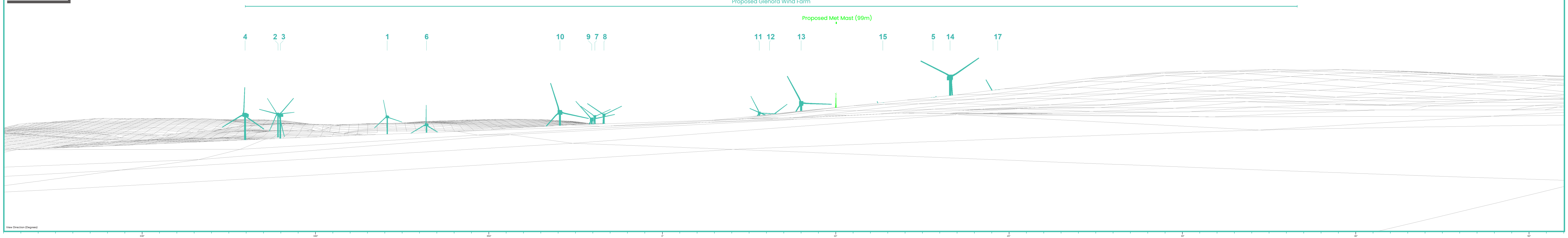
Matching Wireline



Proposed Photomontage with Cumulative at 90°



Matching Wireline



Proposed Photomontage with Cumulative at 53.5°



View Direction (Degrees)

350°

0°

10°

20°

30°

26.5°

53.5°

9.1°

18.2°

4

2 3

1

6

10

9 7 8

11 12

13

15

5 14

17

